

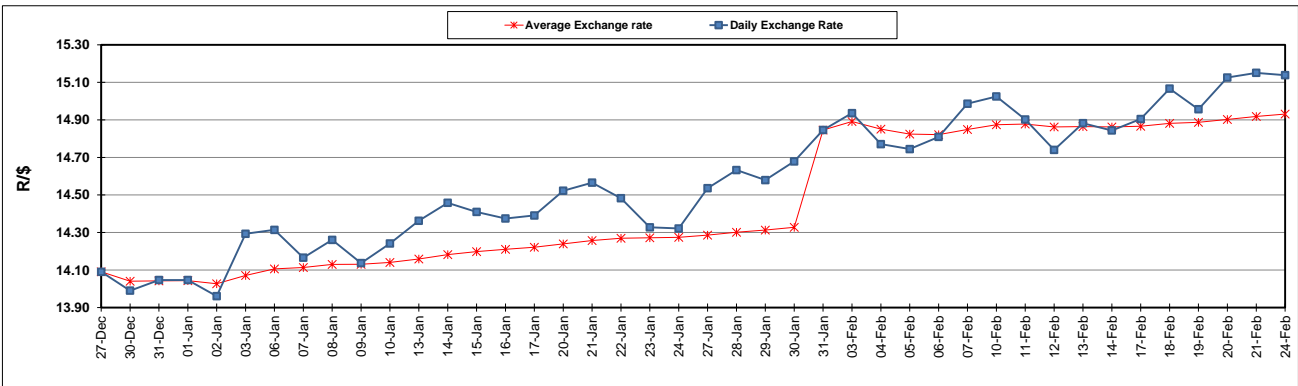
	PETROL 95 ULP	PETROL 93 ULP & LRP	DIESEL 0.05%	DIESEL 0.005%	ILL. PAR.
GAUTENG PUMP PRICE (SA c/l) AS FROM 05/02/2020	1,603.000	1,571.000	-	-	-
WHOLESALE PRICE (SA c/l) AS FROM 05/02/2020	-	-	1,457.260	1,462.660	924.728
SINGLE NATIONAL MAXIMUM RETAIL PRICE	-	-	-	-	1,176.000
BASIC FUEL PRICE - 24/02/2020 (SA c/l)	672.553	660.171	678.223	682.015	660.570
PRESS RELEASE CONTRIBUTION TO BFP 05/02/2020 - 24/02/2020 (SA c/l)	686.970	664.970	737.630	743.030	734.128
UNIT OVER/(UNDER) RECOVERY - 24/02/2020 (SA c/l)	14.417	4.799	59.407	61.015	73.558
AVERAGE BASIC FUEL PRICE 31/01/2020 - 24/02/2020	674.203	662.234	689.081	694.675	672.096
AVERAGE UNIT OVER/(UNDER) RECOVERY 31/01/2020 - 24/02/2020	15.061	5.030	49.432	49.238	62.562

ANALYSIS MOVEMENT OF AVERAGE OVER/(UNDER) RECOVERY

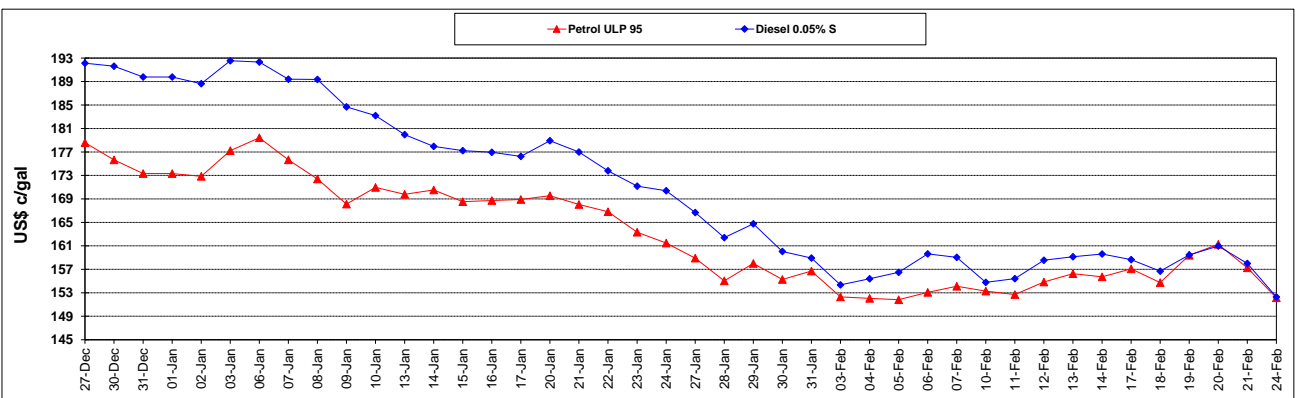
	PETROL 95	PETROL 93	DIESEL 0.05%	DIESEL 0.005%	ILL. PAR.
- MOVEMENT IN INTERNATIONAL PRODUCT PRICES	42.312	31.797	77.283	77.315	89.726
- MOVEMENT IN EXCHANGE RATE	(27.251)	(26.767)	(27.852)	(28.078)	(27.165)
AVERAGE UNIT OVER/(UNDER) RECOVERY 31/01/2020 - 24/02/2020	15.061	5.030	49.432	49.238	62.562

R/\$ EXCHANGE RATE - (R/\$15.1384 - 24/02/2020)

EXCHANGE RATE USED IN BASIC FUEL PRICE



INTERNATIONAL PRODUCT PRICES OF BASKET USED IN BASIC FUEL PRICE



BASIC FUEL PRICE IN SA CENTS PER LITRE

